



Dear friend!

I'm glad you stumbled upon my author's pattern.

CORSET WITH ANGLES!

I sincerely hope that it will bring you invaluable benefit!

*Corset pattern is given in 5 sizes: **XS**, **S**, **M**, **L**, **XL***

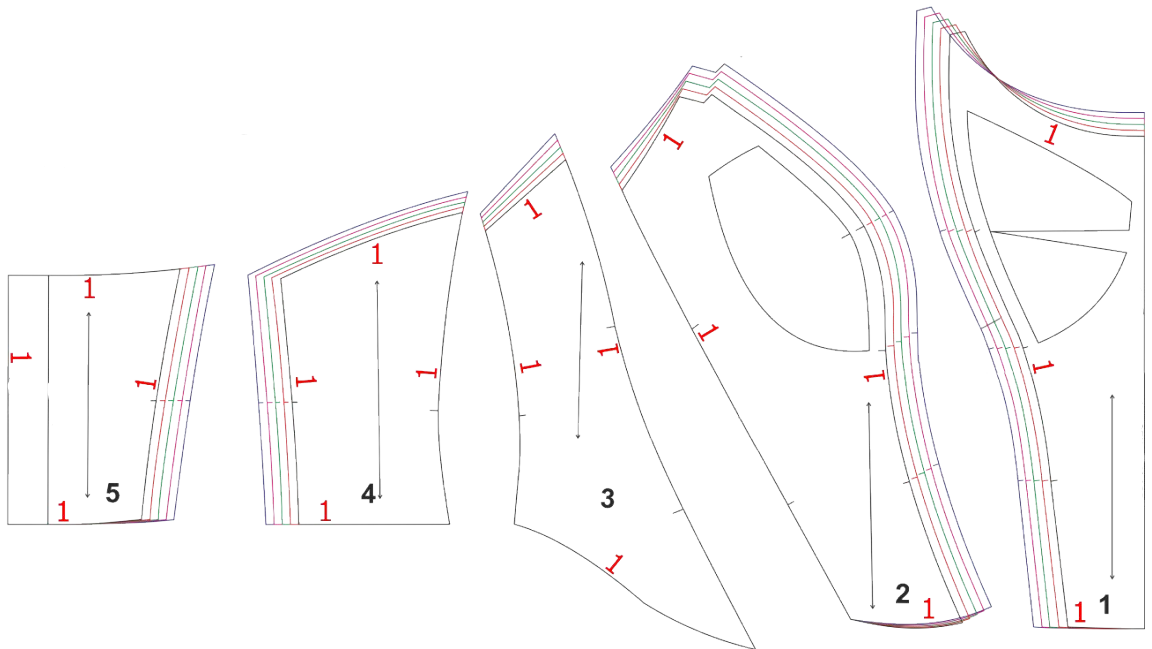
THE SIZE	XS	S	M	L	XL
Bust	84	88	92	96	100
Girt under bust	72	76	80	84	88
Waist	65	69	73	77	81

The pattern consists of 5 parts:

- 1- the central part of the front (with a fold)*
- 2- second part of the front*
- 3- side front*
- 4- side back*
- 5- central part of the back*

ATTENTION!

The pattern already has 1 cm seam allowances on all sections!



When printing a pattern, specify in the printer settings:

"Real Size", "Scale 100%"

I wish you easy cutting and sewing!

Sincerely, Elena, founder of Corsetcraft Academy school!

